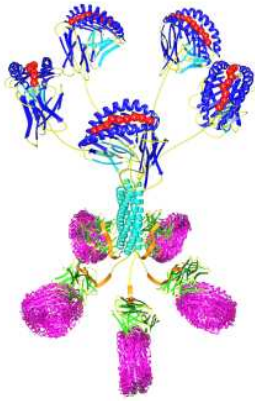


Pro5[®] MHC Class I Pentamers for Simian Alleles

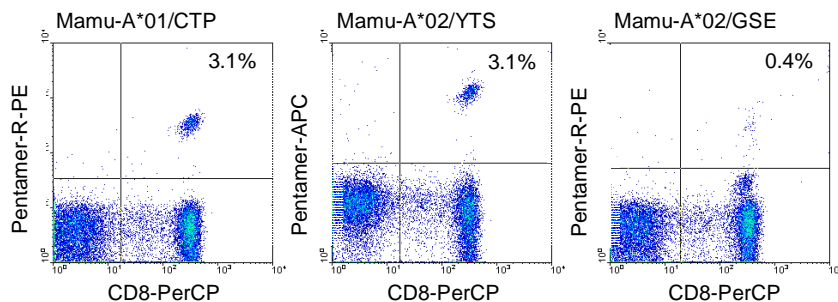


MHC class I-restricted CD8⁺ T cell responses are important for controlling virus replication in both human immunodeficiency virus (HIV) and simian immunodeficiency virus (SIV) infection. Since macaque and human MHC class I molecules have been found to bind peptides derived from similar regions of the Gag and Env proteins of HIV and SIV, detailed studies of the rhesus macaque CD8⁺ T cell response to SIV infection are of considerable benefit to our understanding of the process of HIV infection and successful vaccine development.

ProImmune now offers Pro5[®] MHC Class I Pentamers for simian alleles **Mamu-A*01** and **Mamu-A*02** for use in flow cytometry. Pro5[®] Pentamers deliver consistent and reproducible results and are suitable for detailed epitope characterization, as well as analysis on a single cell level when used in combination with intracellular cytokine staining.

Experimental data from the Tulane National Primate Research Center, USA

ProImmune's Mamu-A*01 and Mamu-A*02 Pro5[®] Pentamers were tested by Dr. Marcelo Kuroda at the Tulane National Primate Research Center (USA).



Mamu-A*01-restricted Pro5[®] Pentamer containing peptide derived from SIV Gag 181-189 (CTPYDINQM), and Mamu-A*02-restricted Pro5[®] Pentamers containing peptides derived from SIV Nef 159-167 (YTSGPGIRY) and SIV Gag 71-79 (GSENLKSLY), were tested on whole blood from SIVmac251-infected Mamu-A*01⁺/Mamu-A*02⁺ rhesus macaques.

Simian Allele Products

The table below shows the Pro5[®] Pentamer specificities that are available as catalog items, with a dispatch time of 5-10 working days. Pro5[®] Pentamers are available with R-PE, APC or biotin label. Alternatively, an unlabeled Pentamer can be ordered along with a Pro5[®] Fluorotag (R-PE or APC) or Pro5[®] Biotag (biotin label). Unlabeled Pentamers are perfect for long-term studies as they are guaranteed for 12 months when stored at -80°C. The corresponding matched peptide can also be ordered in 1 mg or 2 mg quantity. Alternatively, a Custom Pro5[®] Pentamer with Mamu-A*01 or Mamu-A*02 can be made to your specification in 4-6 weeks.

Peptide Code	Allele	Sequence	Origin
1110	Mamu-A*01	CTPYDINQM	SIV Gag 181-189
1111	Mamu-A*02	YTSGPGIRY	SIV Nef 159-167
1112	Mamu-A*02	GSENLKSLY	SIV Gag 71-79

Further Information

Email: enquiries@proimmune.com
 Web: www.proimmune.com
 USA & Canada: +1 888 505 7765
 All other countries: +44 (0) 870 042 7279

ST15 v1.1 Last revision January 2011